



# San Bernardino County Pool Summary (as of 6/30/09)

Security Type	Par Value	Amortized Cost	Market Value	Market % of Portfolio	Yield to Maturity At Cost	Weighted Avg. Maturity	Modified Duration
Bankers Acceptances	0.00	0.00	0.00	0.0%			
Certificates of Deposit	340,000,000.00	340,001,328.40	340,002,905.60	8.1%	0.35%	21	0.06
Collateralized CD	0.00	0.00	0.00	0.0%			
Commercial Paper	275,000,000.00	274,838,765.25	274,903,840.00	6.6%	0.39%	39	0.11
Corporate Notes	146,234,000.00	146,549,443.92	146,569,835.81	3.5%	2.91%	73	0.20
Federal Agencies	2,849,659,000.00	2,866,567,345.60	2,900,027,455.79	69.4%	2.35%	480	0.83
Money Market Funds	391,000,000.00	391,000,000.00	391,000,000.00	9.3%	0.24%	1	0.003
Municipal Debt	0.00	0.00	0.00	0.0%			
Repurchase Agreements	0.00	0.00	0.00	0.0%			
TLGP Corp. Notes	50,000,000.00	49,947,035.00	50,237,825.00	1.2%	1.49%	570	1.53
U.S. Treasuries	80,000,000.00	79,617,550.20	79,840,860.00	1.9%	1.58%	1,314	3.54
<b>Total Securities</b>	<b>4,131,893,000.00</b>	<b>4,148,521,468.37</b>	<b>4,182,582,722.20</b>	<b>100.0%</b>	<b>1.85%</b>	<b>371</b>	<b>0.73</b>
Cash Balance	<b>189,888,894.95</b>	<b>189,888,894.95</b>	<b>189,888,894.95</b>				
TAGP/FDIC Now Balance	<b>100,000,000.00</b>	<b>100,000,000.00</b>	<b>100,000,000.00</b>				
<b>Total Investments</b>	<b>4,421,781,894.95</b>	<b>4,438,410,363.32</b>	<b>4,472,471,617.15</b>				
Accrued Interest		<b>21,577,355.31</b>	<b>21,577,355.31</b>				
<b>Total Portfolio</b>	<b>4,421,781,894.95</b>	<b>4,459,987,718.63</b>	<b>4,494,048,972.46</b>				

1. Yield for the money market funds is a weighted average of the month-end yields for the Federated, Goldman, and Fidelity money market funds.

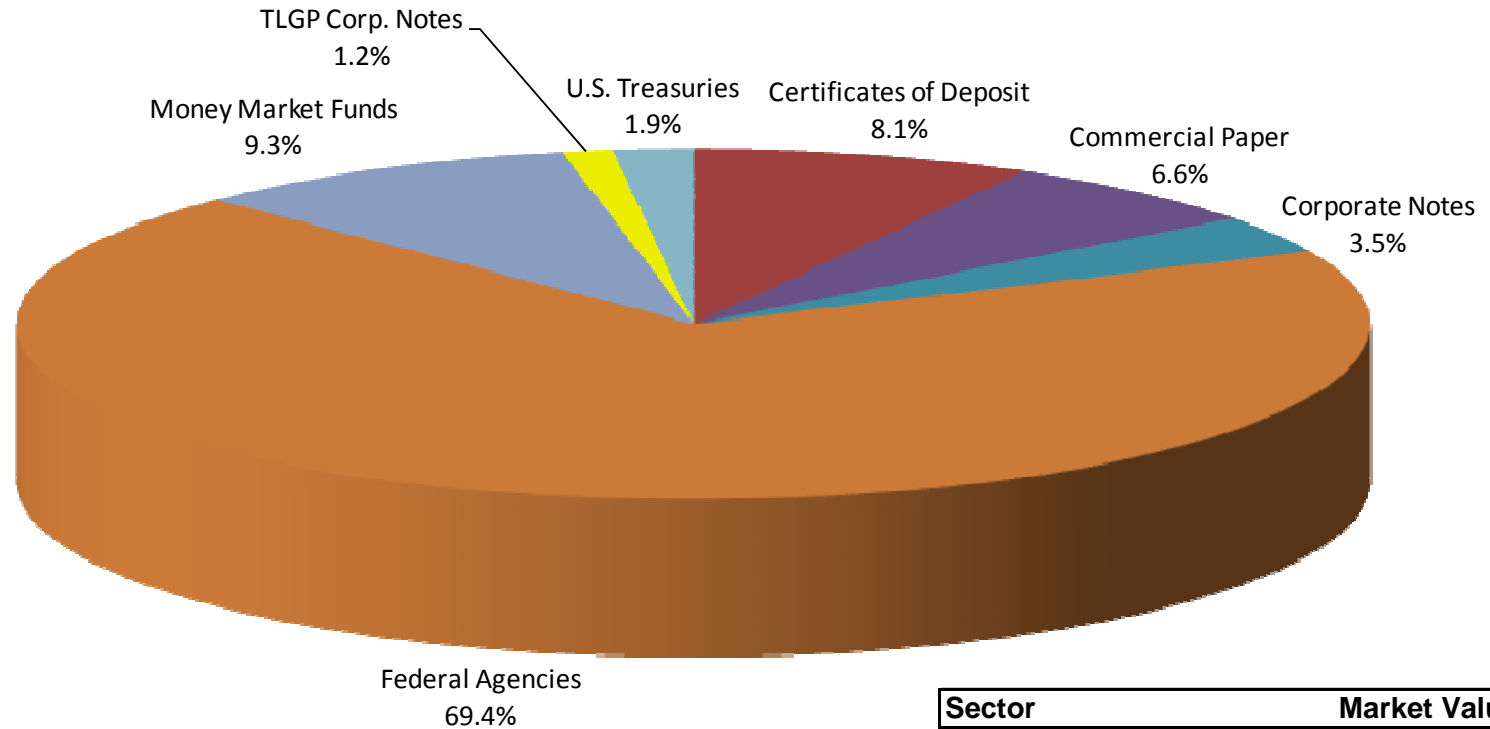
2. Statistics for the total portfolio include money market funds.

3. Market prices are derived from closing bid prices as of the last business day of the month as supplied by F.T. Interactive Data, Bloomberg, or Telerate. Prices that fall between data points are interpolated.



# San Bernardino County Pool

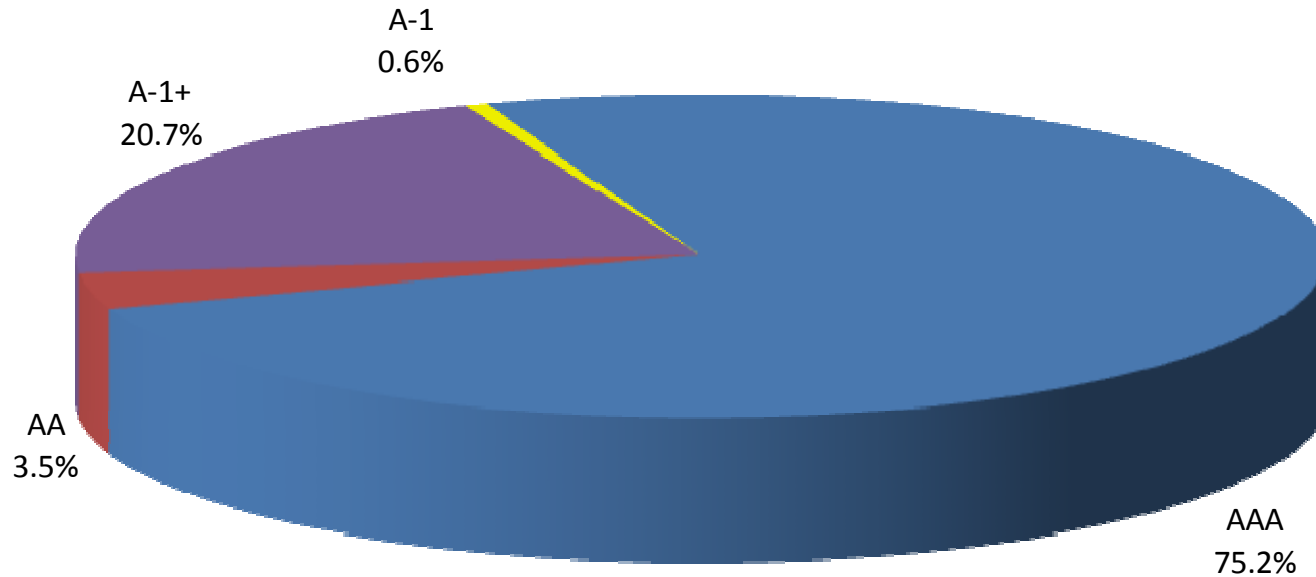
## Sector Distribution (as of 6/30/09)



Sector	Market Value
Bankers Acceptance	0.00
Certificates of Deposit	340,002,905.60
Collateralized CD	0.00
Commercial Paper	274,903,840.00
Corporate Note	146,569,835.81
Federal Agencies	2,900,027,455.79
Money Market Funds	391,000,000.00
Municipal Debt	0.00
Repurchase Agreement	0.00
TLGP Corp. Notes	50,237,825.00
U.S. Treasuries	79,840,860.00



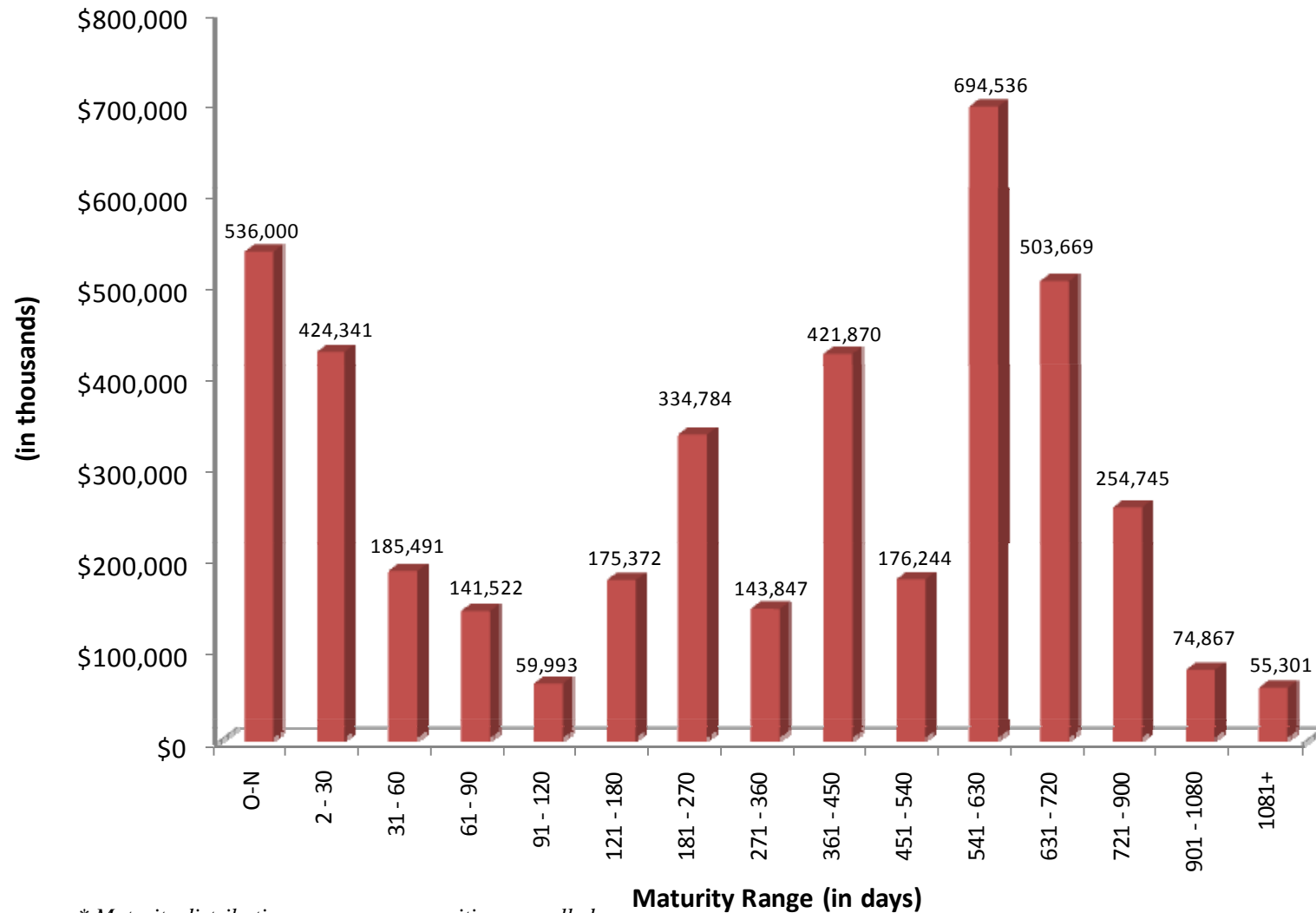
# San Bernardino County Pool Credit Quality Distribution (as of 6/30/09)



Credit Rating	Market Value
A-1+ (Short-Term)	864,320,315.60
A-1 (Short-Term)	24,998,600.00
AAA (Long-Term)	3,146,693,970.79
AA (Long-Term)	146,569,835.81



# San Bernardino County Pool Maturity Distribution (as of 6/30/09)



\* Maturity distribution assumes no securities are called



# San Bernardino County Pool Portfolio Yield Summary

<b>Month</b>	<b>Yield to Maturity At Cost</b>
June 2008	3.55%
July 2008	3.54%
August 2008	3.51%
September 2008	3.39%
October 2008	3.14%
November 2008	2.98%
December 2008	2.63%
January 2009	2.56%
February 2009	2.26%
March 2009	2.10%
April 2009	1.87%
May 2009	1.93%
<b>June 2009</b>	<b>1.85%</b>

1. Gross yields not including non-earning assets (compensating bank balances) or administrative costs for management of the pool.
2. All historical yields restated to include money market funds.